

## Introduction

Hello and welcome to Reception.



I am Mrs Taylor, Reception's class teacher, and this is Mrs Allatt our teaching assistant.

We are really excited to welcome you into Reception and we are looking forward to getting to know you.

To get into the Reception building, you can come through the gate for the Foundation Stage Unit, which is the smaller building across from the main school building.

The rest of this leaflet contains useful tips and information you may need throughout this year.

## Times

- School doors open: 8.40am
- School starts: 8.45am
- School Day ends: 3.10pm

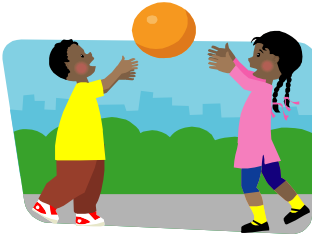
If your child arrives late please go to the main school office to sign your child into school as the register will have closed.

Please ring in advance if somebody different is picking your child up from Reception Class. For the safety of your child we will not let an unknown person collect your child until we have confirmed this with you.

## Uniform

We encourage all children to wear the school uniform, as it helps to give a sense of belonging and pride. Many items can be obtained from local uniform shops or supermarkets.

- School jumper/cardigan or plain royal blue jumper/cardigan
- Dark grey trousers or skirt
- White shirt or polo t-shirt
- Appropriate footwear for outdoor play with velcro fastenings.
- School tie (optional)



## Physical Development

There will be lots of opportunities for the children to develop their physical skills whilst in Reception. The children will have access to the fabulous outdoor learning area every day, with opportunities to run, jump, climb and cycle! Therefore, please ensure that your child always wears appropriate footwear, so that they can participate safely.

## Outdoor Play



For outdoor play, please remember to send your child to school in a coat with a hood **every day**, even if it is sunny in the mornings as the weather can change throughout the day. If it is sunny, please apply sun cream to your child and send them in with a sunhat/cap.

## Sickness

If your child is unwell during the day a member of staff may ring to inform you or ask you to collect the child if we feel it is necessary. If your child is ill before the start of school it is always a good idea to keep them off and let us know at the office.



For Health and Safety reasons we should not administer medicines in school. Just occasionally this may be possible. Therefore, if your children needs medication for a few days, please see a member of staff to sign a consent slip.

Children on daily, long term medication (usually asthmatics) are given them when required - again a permission slip needs to be signed.



Accidents do happen, but obviously we do all we can to protect all in our school. We usually speak with parents at the end of the day if there has been an incident. All accidents are recorded in the school accident book.

ALL Saints' C.E. Primary school  
Headteacher: Mrs Hardy

**School Telephone Number: 01706 640728**